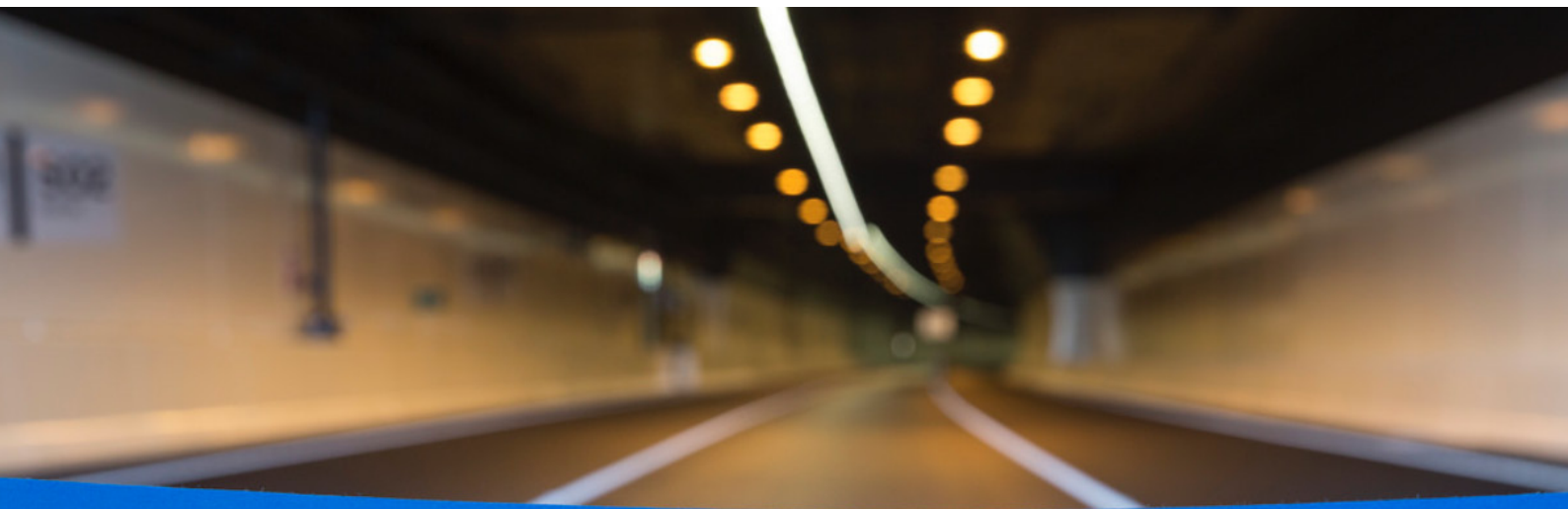




READY, TEST, GO

NZTA fast-tracks application testing
with Revera Homeland IaaS



Waterview Connection
Officially opened 18 June 2017



New Zealand Government

Waterview Connection
Officially opened 18 June 2017



New Zealand Government

Waterview Connection
Officially opened 18 June 2017



“Testing applications in a production-like environment in the cloud makes perfect sense.” – Steve Lee, Waterview Tunnel integration project manager, NZTA

The 2.4km Waterview Tunnel between Pt Chevalier and Mt Roskill is the final piece of Auckland’s 48 km Western Ring Route, connecting Manukau, the city, West Auckland, and the North Shore.

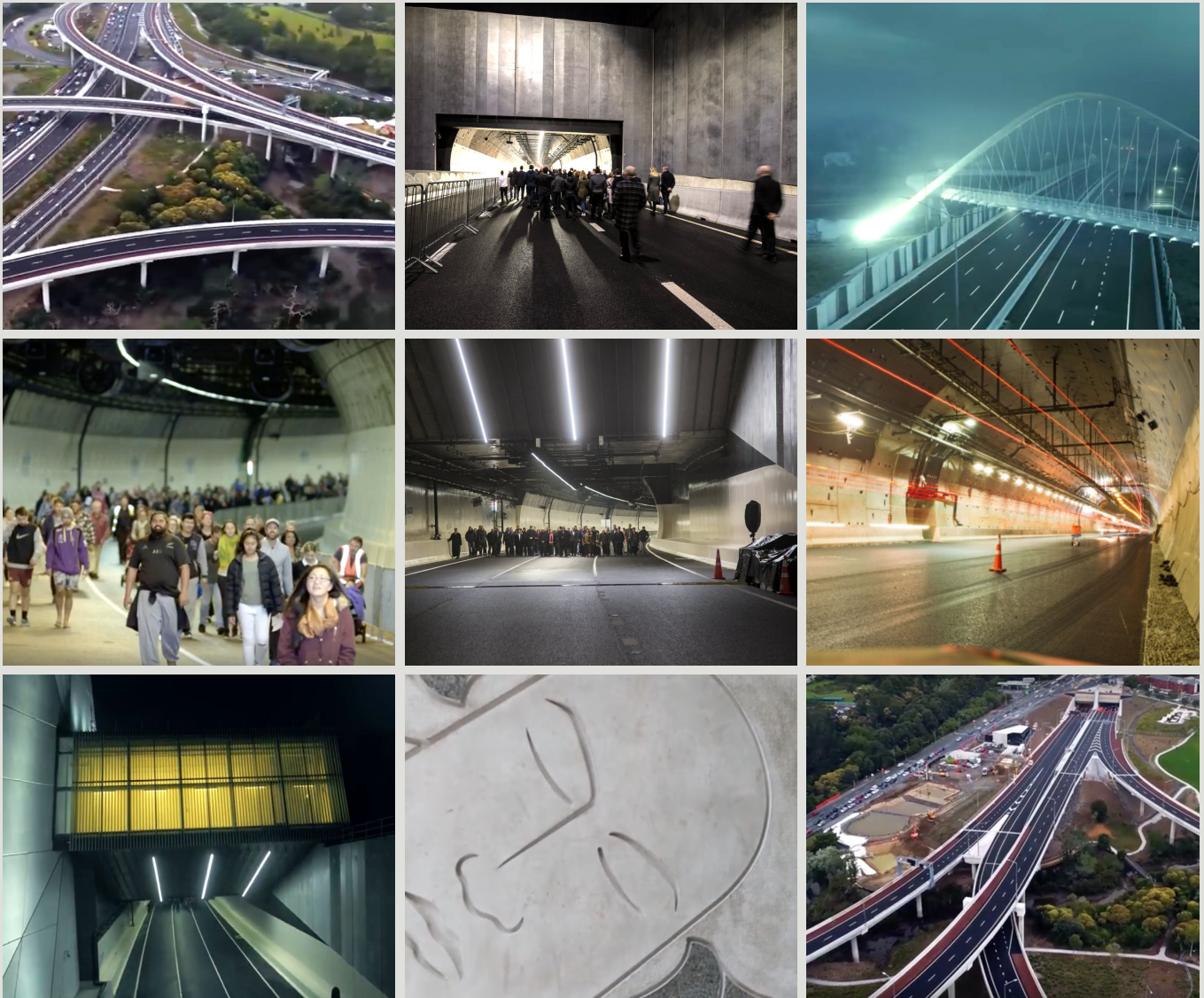
Since opening, the tunnel is credited with improving traffic flow on Auckland roads, including almost halving travel times between Auckland’s CBD and the airport.

Behind the scenes, software managing traffic (ATMS) and plant (PMCS) devices keeps traffic moving through the tunnel. Like the tunnel itself, new management software called Sidera was planned, tested, and integrated with other NZTA systems well before the tunnel opened.

Just 10 months from opening day, Steve Lee was hired to do the job, testing the software to catch and fix glitches before the new tunnel management system swung into action.

Taking charge of the brief and architecture for a development environment in Revera’s Homeland Cloud, Lee spent the following months testing up to four ‘pairs’ of NZTA’s new Sidera application alongside the agency’s Dynac management system.

He said the opportunity to build and retire application testing ‘pairs’ in the cloud was a huge advantage.

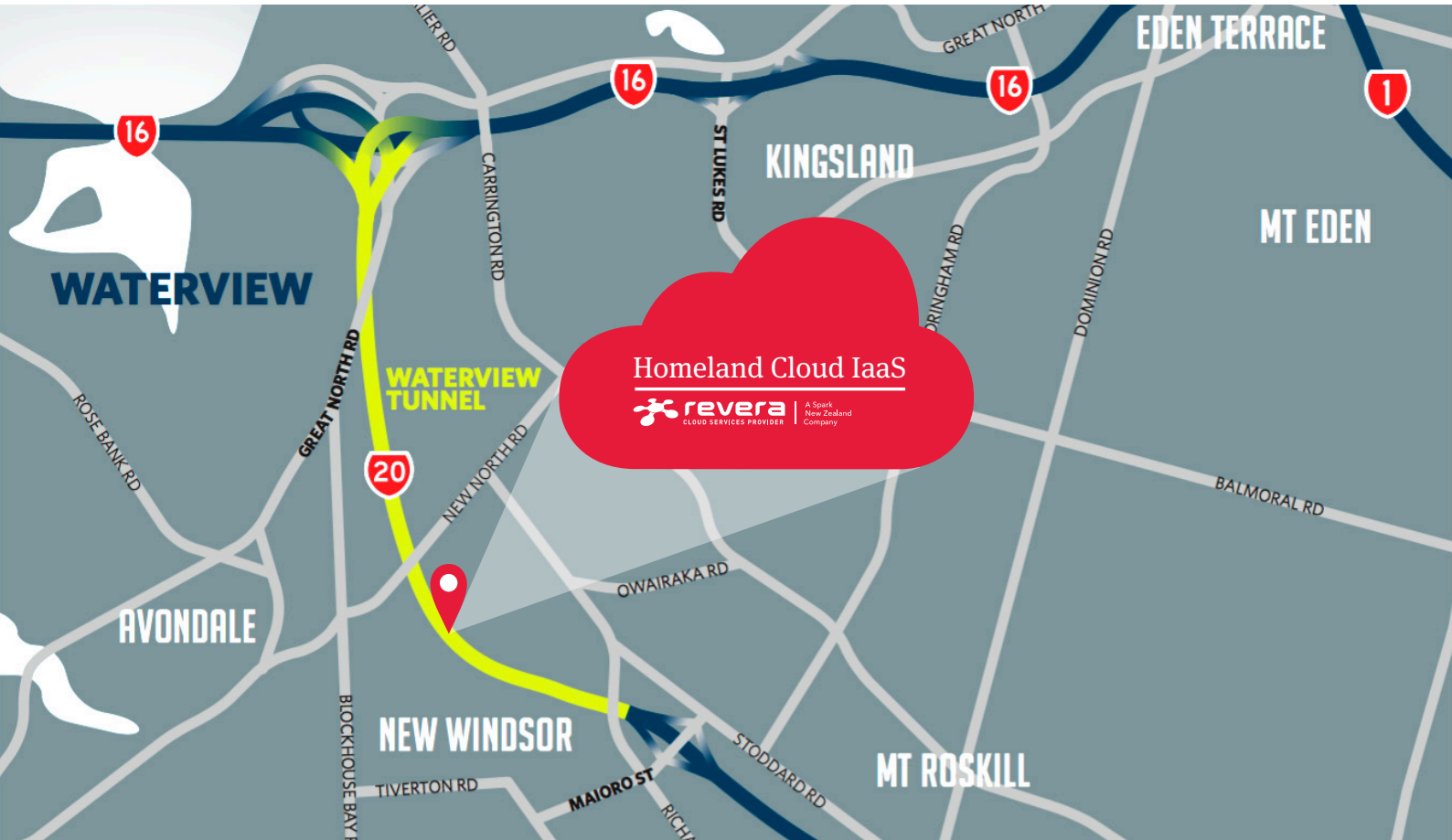


“Revera’s Homeland Cloud is very flexible. Spinning up additional application pairs is quick and simple. **And we can just as easily decommission VMs we don’t need,”** said Lee.

“The principal advantage of testing in the cloud is that you only pay for what you need. So it makes perfect sense.”


He said the successful integration of the Sidera application demonstrated the value

of pre-production application testing in an integrated test environment. Lee said Revera’s Homeland Cloud development environment would be used to test all future applications.





REVERA HOMELAND CLOUD AT NZTA

Lee and his team built and retired testing ‘pairs’ in Revera’s Homeland Cloud:

- **Faster work**

Revera’s scalable cloud infrastructure reduced the time and effort required to build and activate NZTA’s testing environment.
- **Lower costs**

Paying for unused capacity is history. Lee and his team spin up new VMs, deactivating them when they’re no longer required.
- **Less risky**

Testing applications end-to-end in a production look-a-like environment ensured Lee released higher quality software.
- **Easy-as**

Working in an enterprise-class cloud, built from the ground up to integrate management and development tools, made a big job much smaller.



LEARN MORE
ABOUT REVERA HOMELAND CLOUD IAAS

Call a Revera business development manager on
0800 222 474 or email **enquiry@revera.co.nz**

www.revera.co.nz

